

ESUHSD
Strategic Plan
&
Local Control Accountability Plan

November 19, 2015

Strategic Plan & LCAP Data Points

Strategic Plan - KPMs

- Increase Graduation Rate
- Increase UC/CSU A-G
- Decrease Dropout Rate
- Decrease Achievement Gap
- College/Career Readiness
- Sub Indicators
 - Attendance Rate
 - Suspension Rate
 - D & F Rate
 - Course Completion
- EAP
- SAT, AP, PSAT
- Reclassification Rates

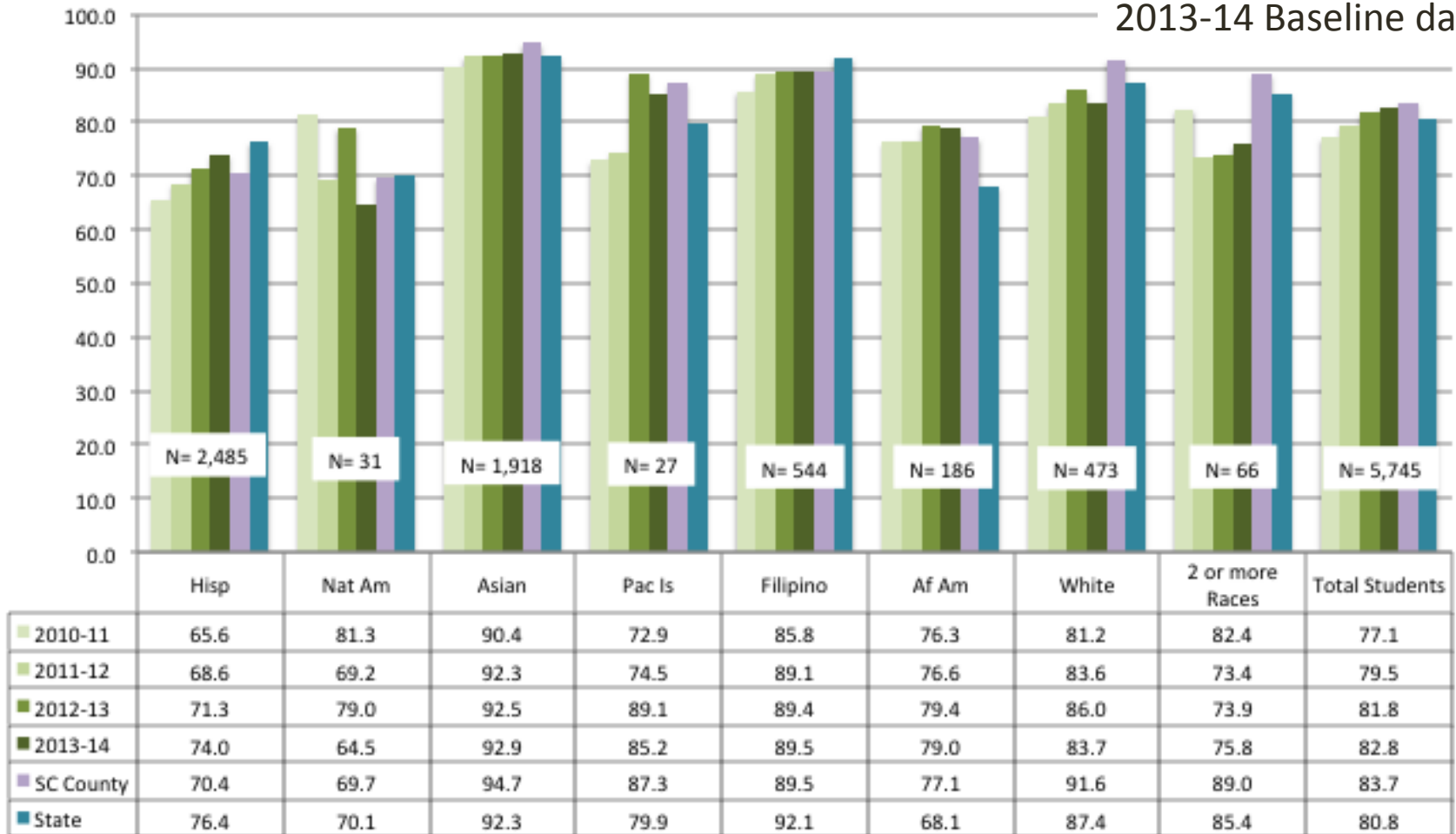
LCAP Data Points

- Graduation Rate
- UC/CSU A-G
- Dropout
- Attendance Rates
- Suspension/Expulsion Rates
- Chronic Absenteeism
- EAP
- CTE Completion
- Reclassification Rates
- AP
- SBAC Assessments
- Teacher Misassignments
- Access to Instructional Materials
- Adequate Facilities
- District Defined Data Points

N= Number of students
in the 4-year cohort

4-year Cohort Graduation Rate by Ethnicity ESUHSD 2011, 2012, 2013, 2014

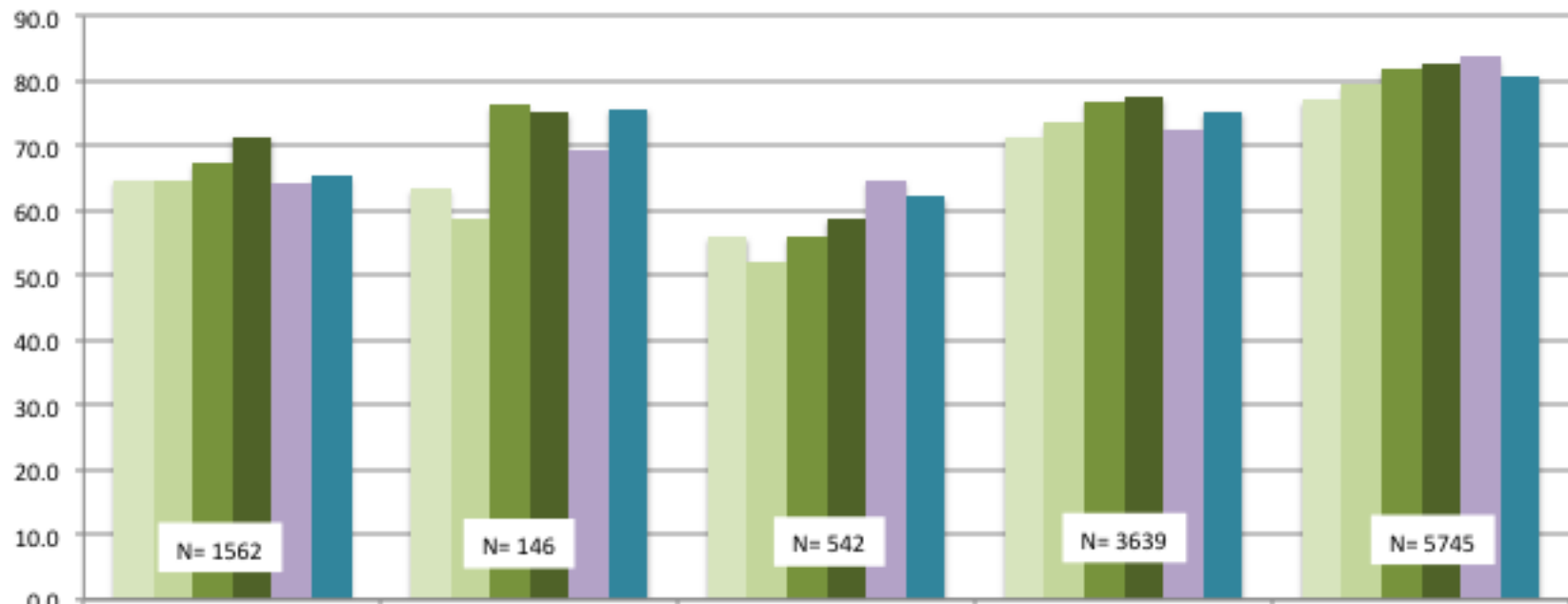
2013-14 Baseline data



- 4 years of growth
- Gaps still exist

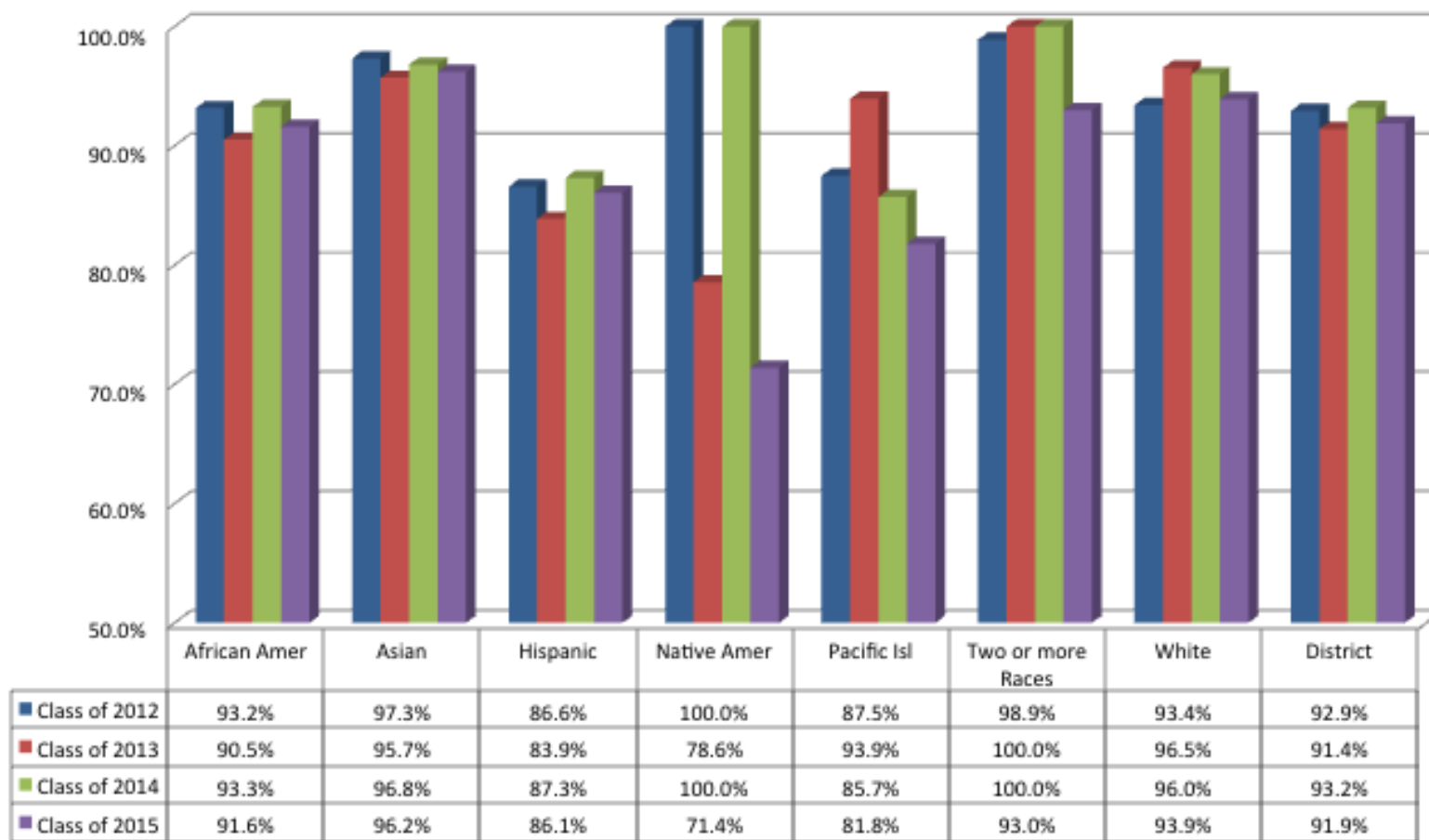
N= Number of students
in the 4-year cohort

4-year Cohort Graduation Rate ESUHSD Special Populations 2011, 2012, 2013, 2014



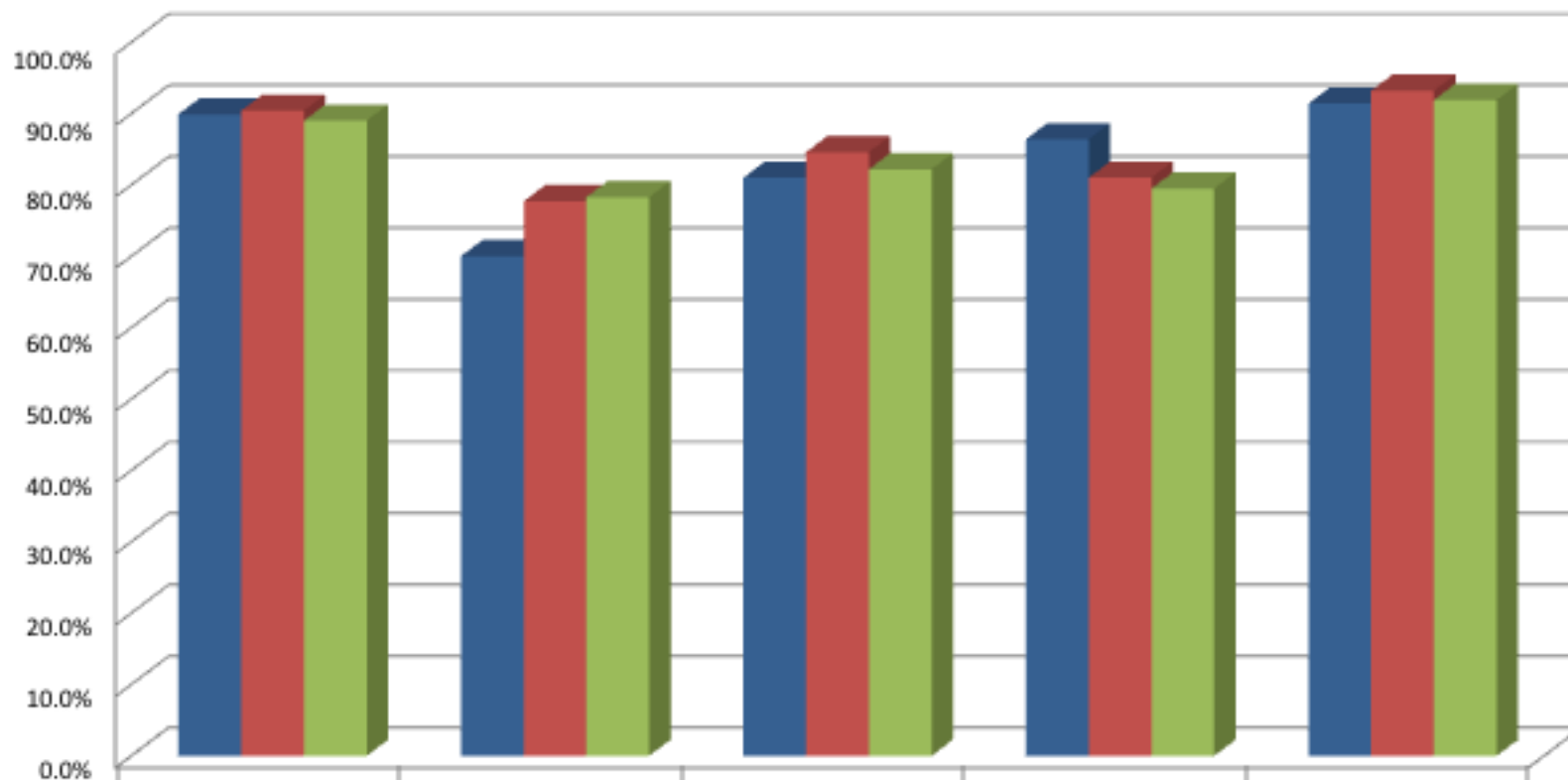
	ELL	Mig Ed	SPED	SED	Total Students
2010-11	64.8	63.4	56.0	71.4	77.1
2011-12	64.7	58.6	52.2	73.6	79.5
2012-13	67.4	76.3	56.0	77.0	81.8
2013-14	71.5	75.2	58.8	77.5	82.8
SC County	64.1	69.4	64.7	72.6	83.7
State	65.3	75.8	62.2	75.4	80.8

East Side Union High School District Locally Defined Cohort Graduation Rates 4 Year Trend - 2012-2015



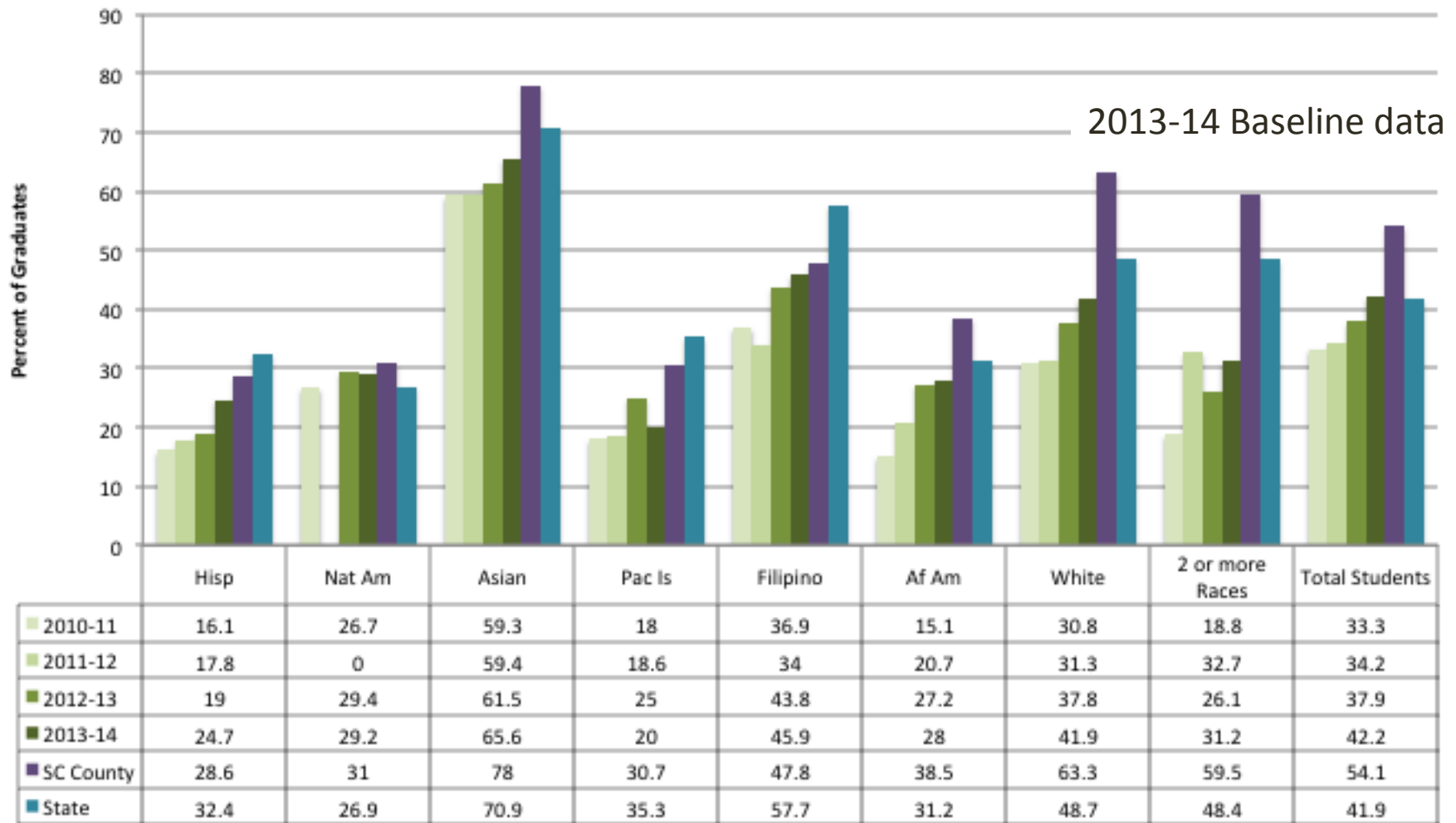
While the district cohort rate showed a decrease, in actuality there were 125 more graduates in the local cohort in 2015 than in 2014. The local cohort also increased by 190 students in 2015, causing the ratio to decrease.

East Side Union High School District Locally Defined Cohort Graduation Rates 3 Year Trend - 2013-2015



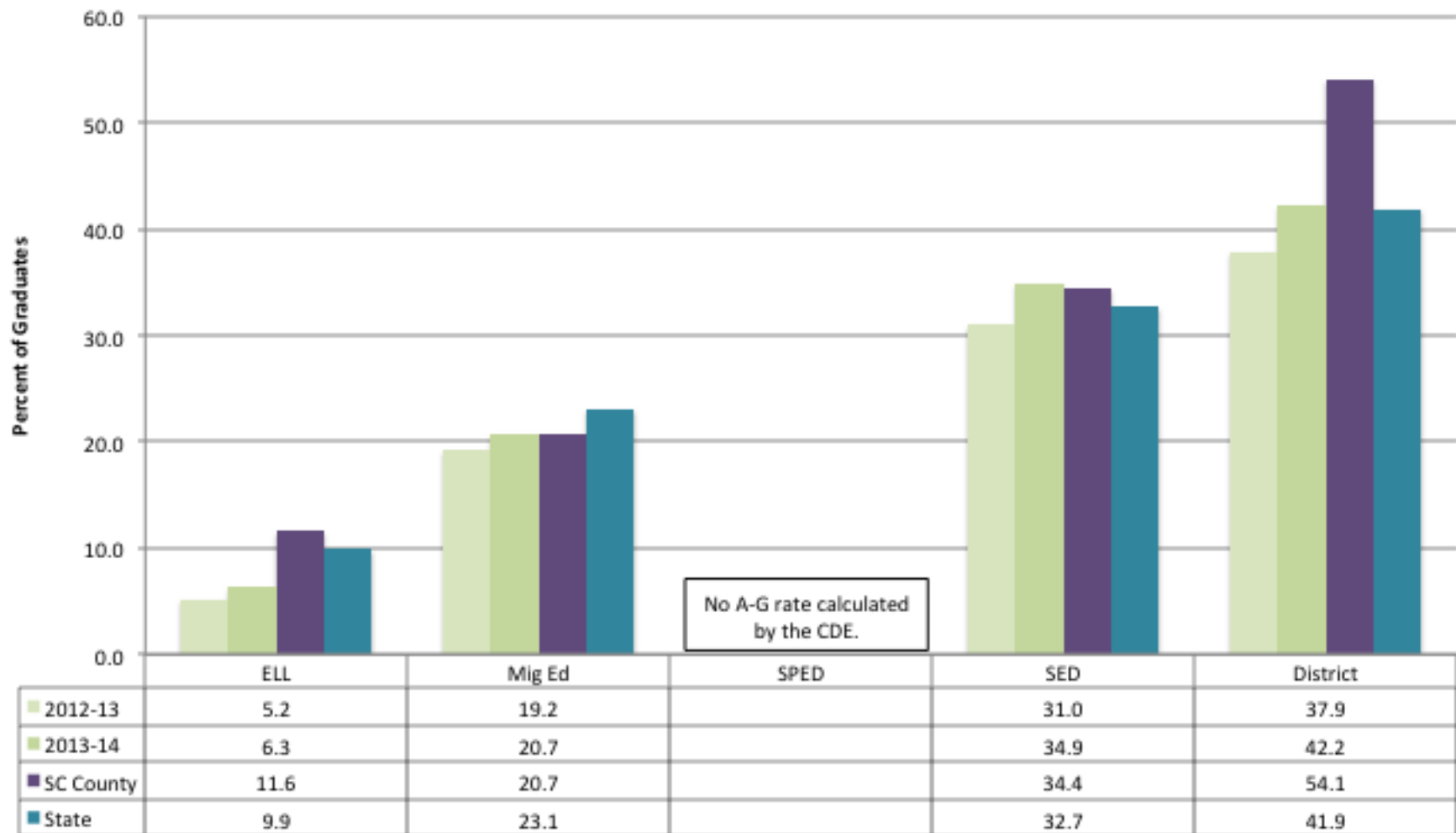
	Socio Econ Disadvantaged	Eng Lang Learner	Spec Ed	Migrant Ed	District
Class of 2013	89.9%	70.0%	81.0%	86.4%	91.4%
Class of 2014	90.4%	77.7%	84.6%	81.0%	93.2%
Class of 2015	89.0%	78.3%	82.2%	79.5%	91.9%

Graduates Completing UC/CSU A-G Courses by Ethnicity ESUHSD 2011, 2012, 2013, 2014

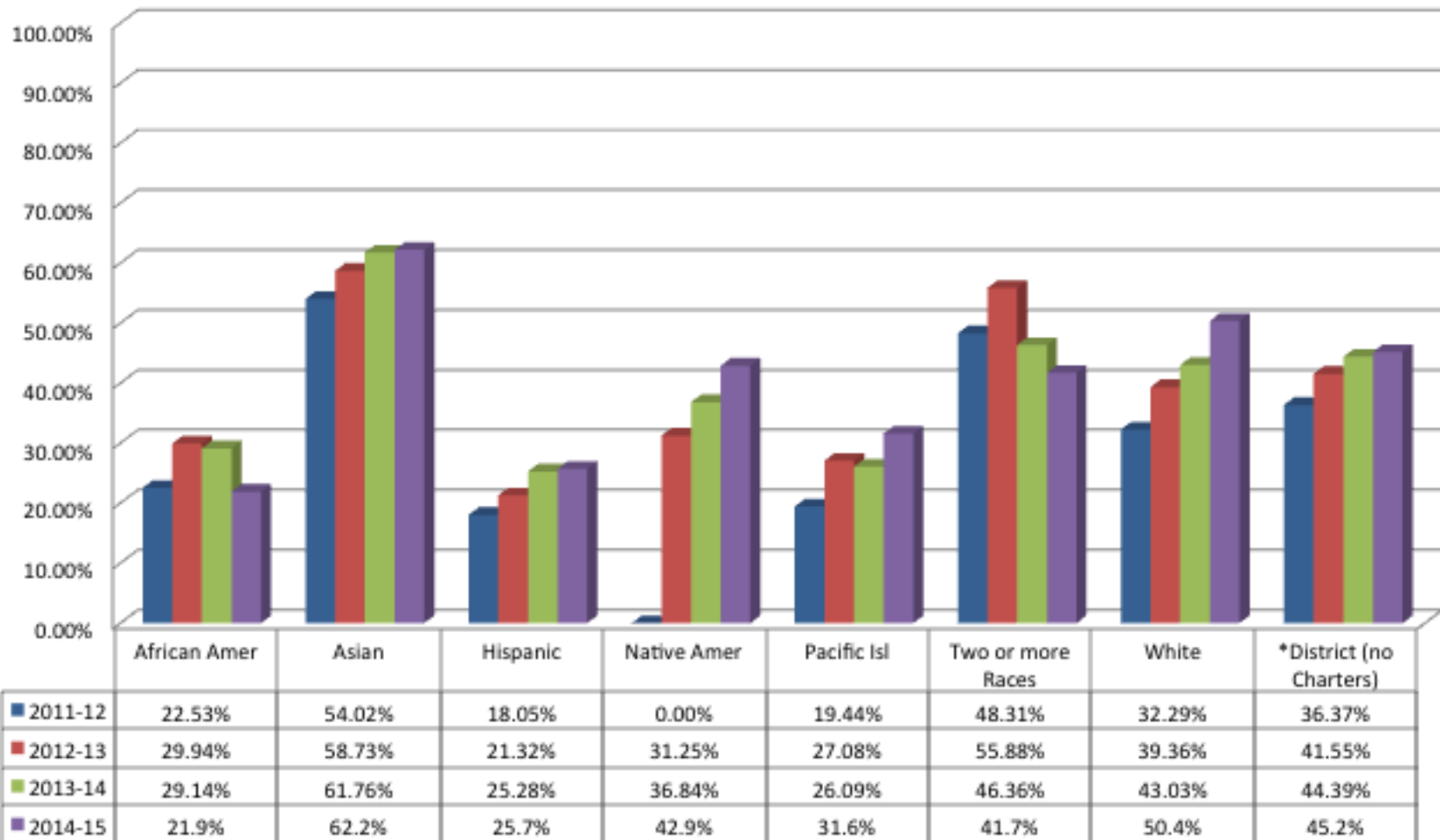


- Class of 2015 was 1st class to graduate with 4 years under default A-G pathway
- 4 years of Increase
- Includes Charter Schools

Graduates Completing UC/CSU A-G Courses Special Population ESUHSD 2013, 2014



East Side Union High School District Local Cohort Percent of Graduates Completing UC/CSU A-G 4 Year Trend - 2012-2015

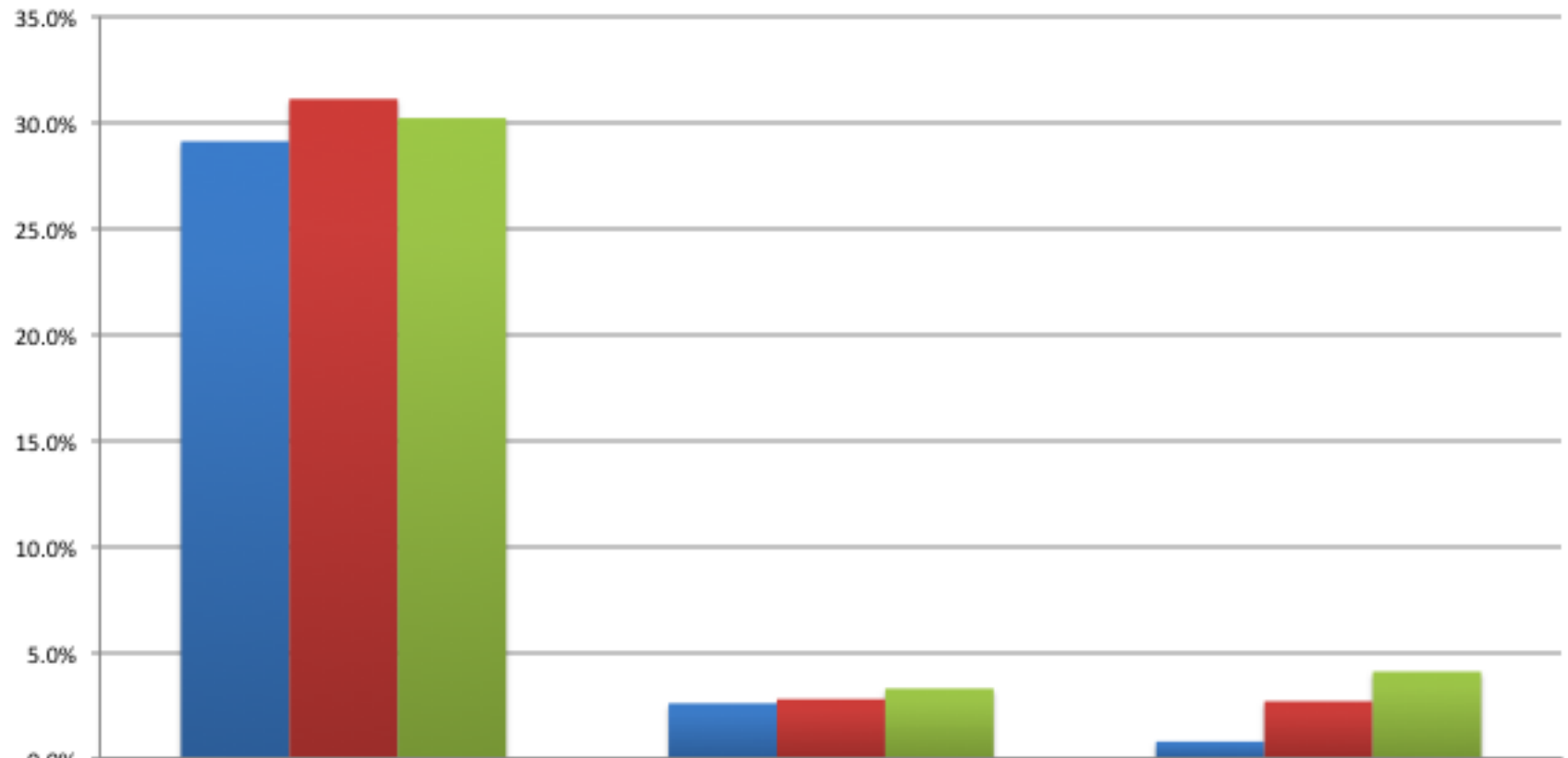


District increased by .8 percentage points

Hispanic increased by .4 percentage points

African American decreased by 7.2 percentage points

East Side Union High School District Local Cohort Percent of Graduates Completing UC/CSU A-G 4 Year Trend - 2012-2015

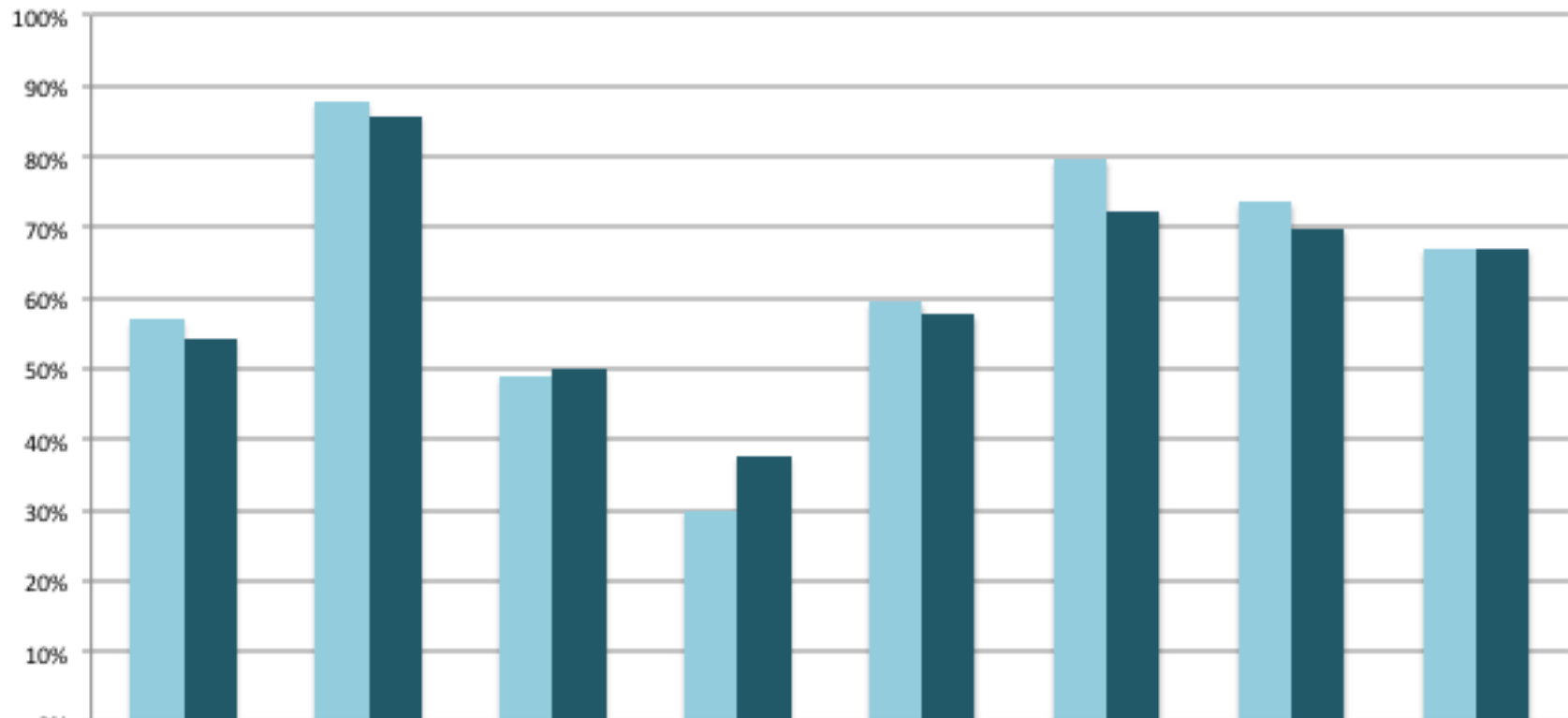


	SED	EL	SPED
2012-13	29.1%	2.6%	0.8%
2013-14	31.1%	2.8%	2.7%
2014-15	30.2%	3.3%	4.1%

District defined timely data

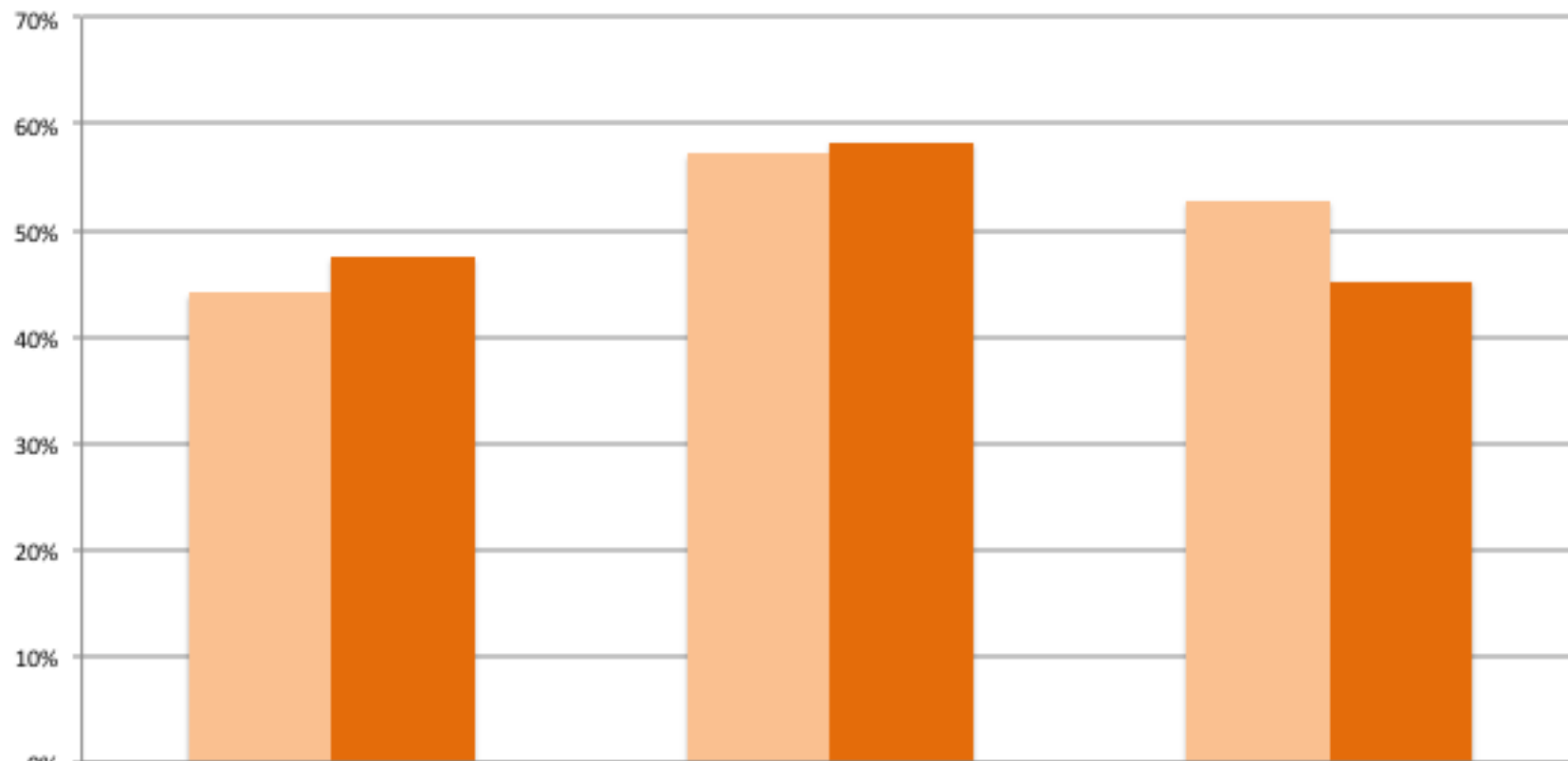
- Graduation Metrics
 - % of 9th grade students earning 60 or more credits
- UC/CSU A-G Metric
 - % of 11th and 12th grade students in higher Math and Science
- Dropout Metric
 - Decrease Completer non-grads
- Graduation, A-G, & Dropout
 - % of Students earning a C or Better
- Defining further metrics for “on track”
 - % of students on track for A-G at each grade level
 - % of students passing 10 credits of English each year

ESUHSD
2013-14 to 2014-15
Comparison of
The Percent of 9th Grade Students Earning 60 or More Credits



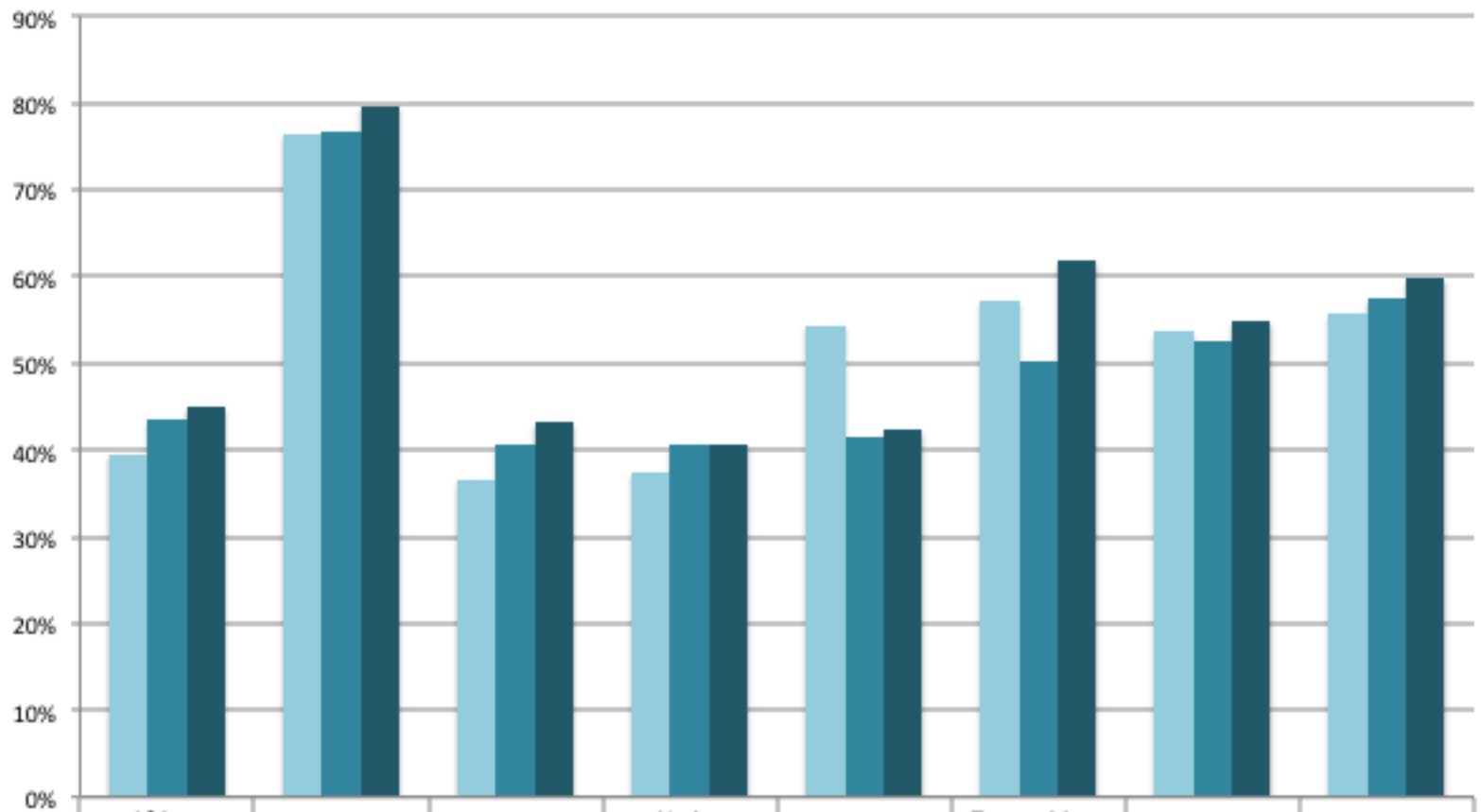
	African American	Asian	Hispanic	Native American	Pacific Islander	Two or More Races	White	Grand Total
2013-14	57%	88%	49%	30%	59%	80%	74%	67%
2014-15	54%	86%	50%	38%	58%	72%	70%	67%

ESUHSD
2013-14 to 2014-15
Comparison of
The Percent of 9th Grade Students Earning 60 or More Credits



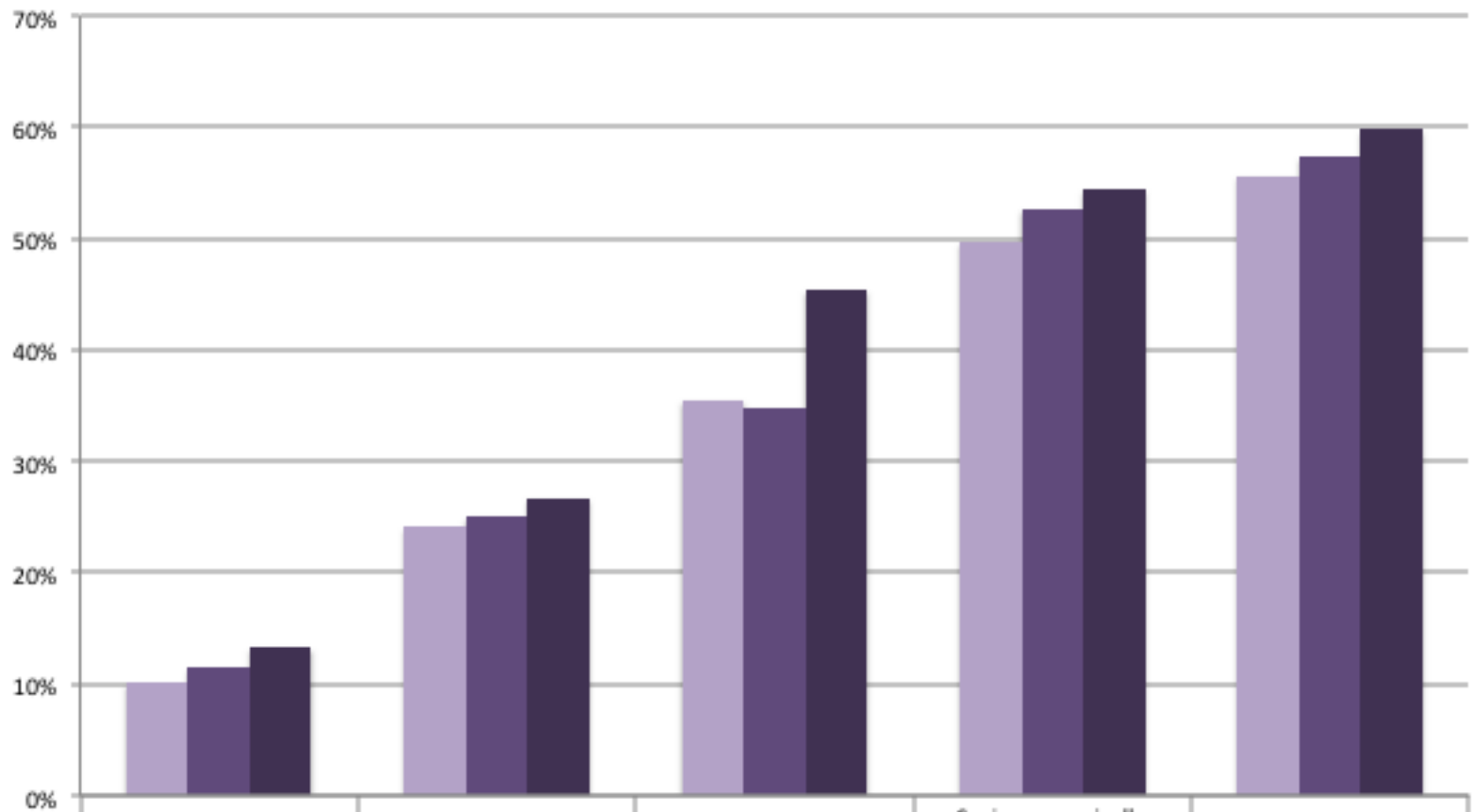
	English Language Learner	Socioeconomically Disadvantaged	SWD
2013-14	44%	57%	53%
2014-15	47%	58%	45%

2013-2015 ESUHSD 11th & 12th Grade Students Accessing Algebra 2 or Higher



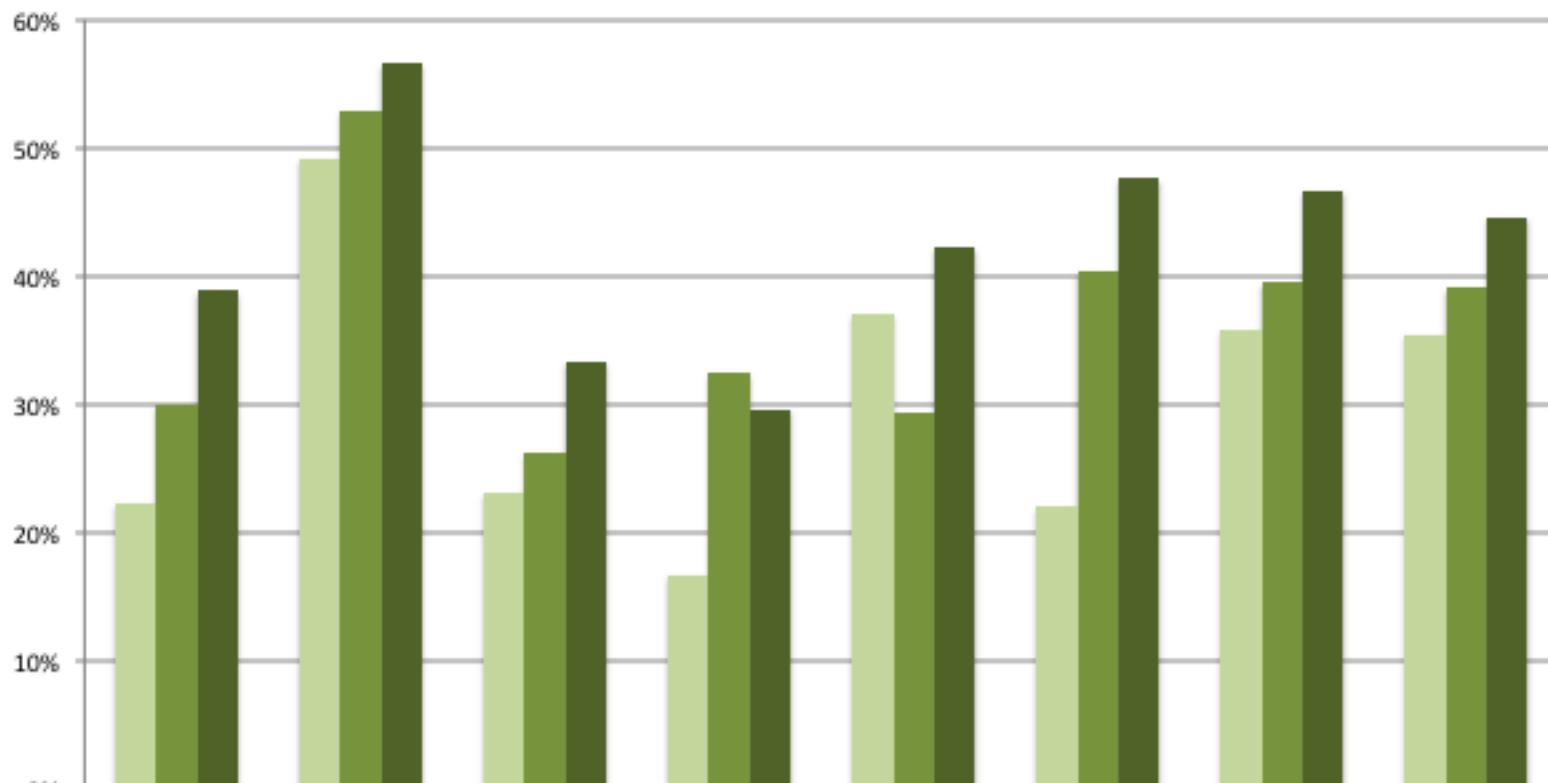
2012-13 Gr 11-12	40%	76%	37%	38%	54%	57%	54%	56%
2013-14 Gr 11-12	44%	77%	41%	41%	41%	50%	53%	57%
2014-15 Gr 11-12	45%	80%	43%	41%	42%	62%	55%	60%

2013-2015 ESUHSD 11th & 12th Grade Students Accessing Algebra 2 or Higher



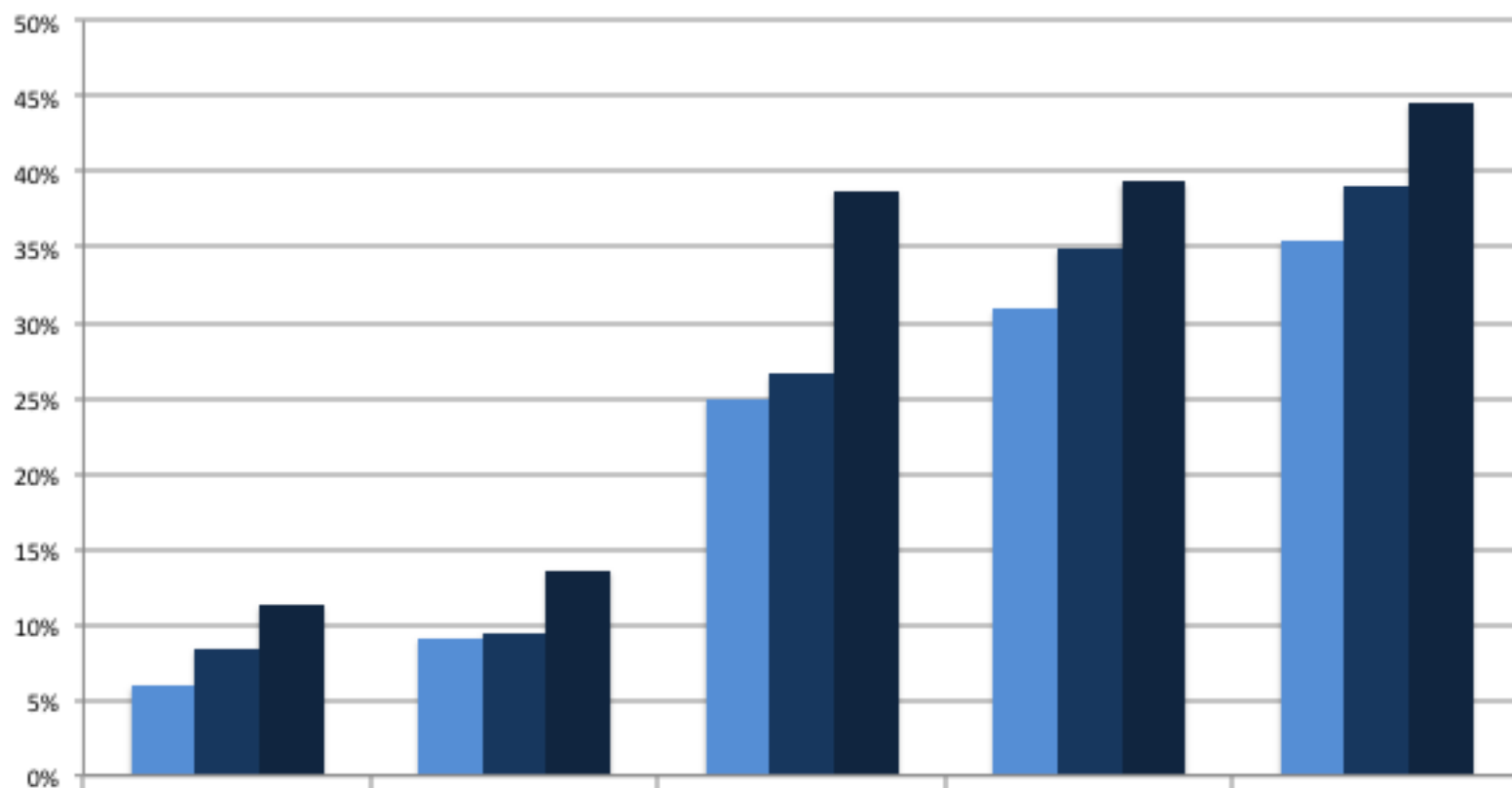
	Students With Disabilities	Eng Lang Learner	Migrant Ed	Socioeconomically Disadvantaged	District Total
■ 2012-13 Gr 11-12	10%	24%	36%	50%	56%
■ 2013-14 Gr 11-12	11%	25%	35%	53%	57%
■ 2014-15 Gr 11-12	13%	27%	45%	54%	60%

**2013-2015 ESUHSD
11th & 12th Grade Students
Accessing Science other than Integrated Science, Biology, or Chemistry**



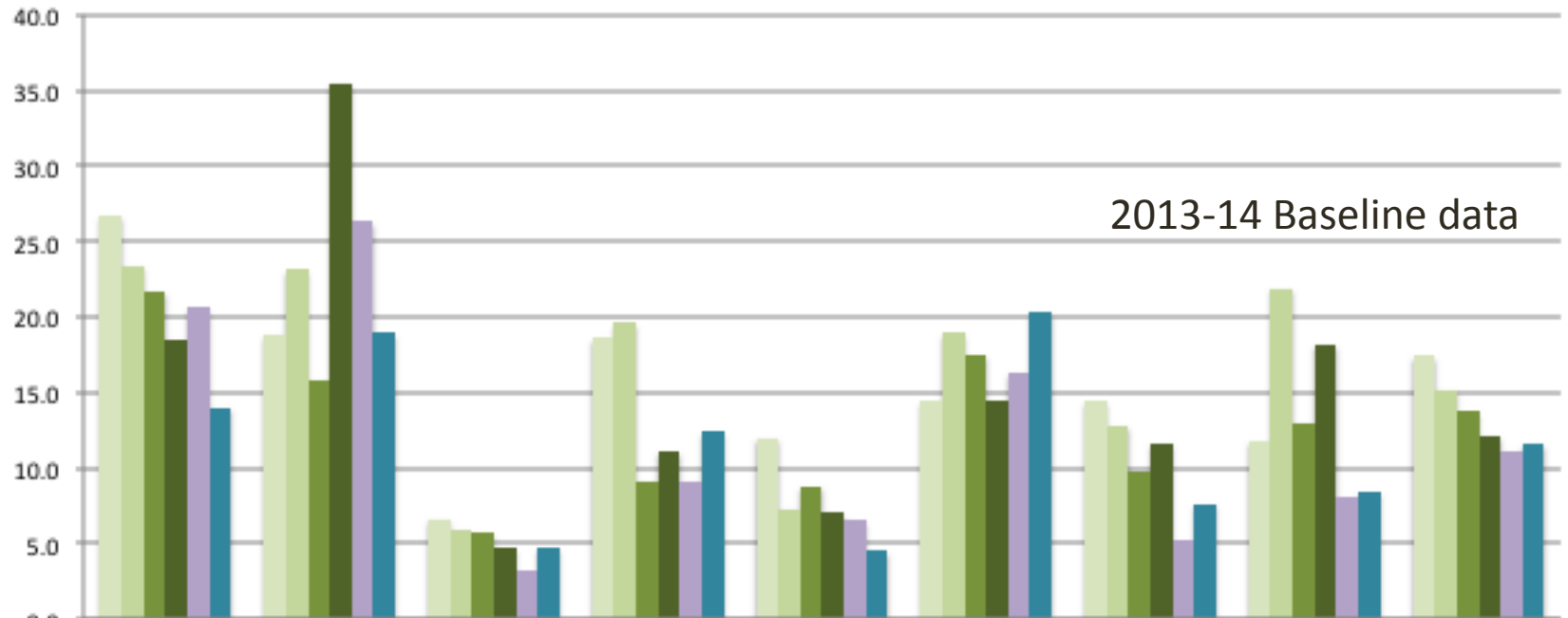
	African American	Asian	Hispanic	Native American	Pacific Islander	Two or More Races	White	District Total
2012-13 Gr 11-12	22%	49%	23%	17%	37%	22%	36%	35%
2013-14 Gr 11-12	30%	53%	26%	32%	29%	40%	39%	39%
2014-15 Gr 11-12	39%	57%	33%	30%	42%	48%	47%	45%

**2013-2015 ESUHSD
11th & 12th Grade Students
Accessing Science other than Integrated Science, Biology, or Chemistry**



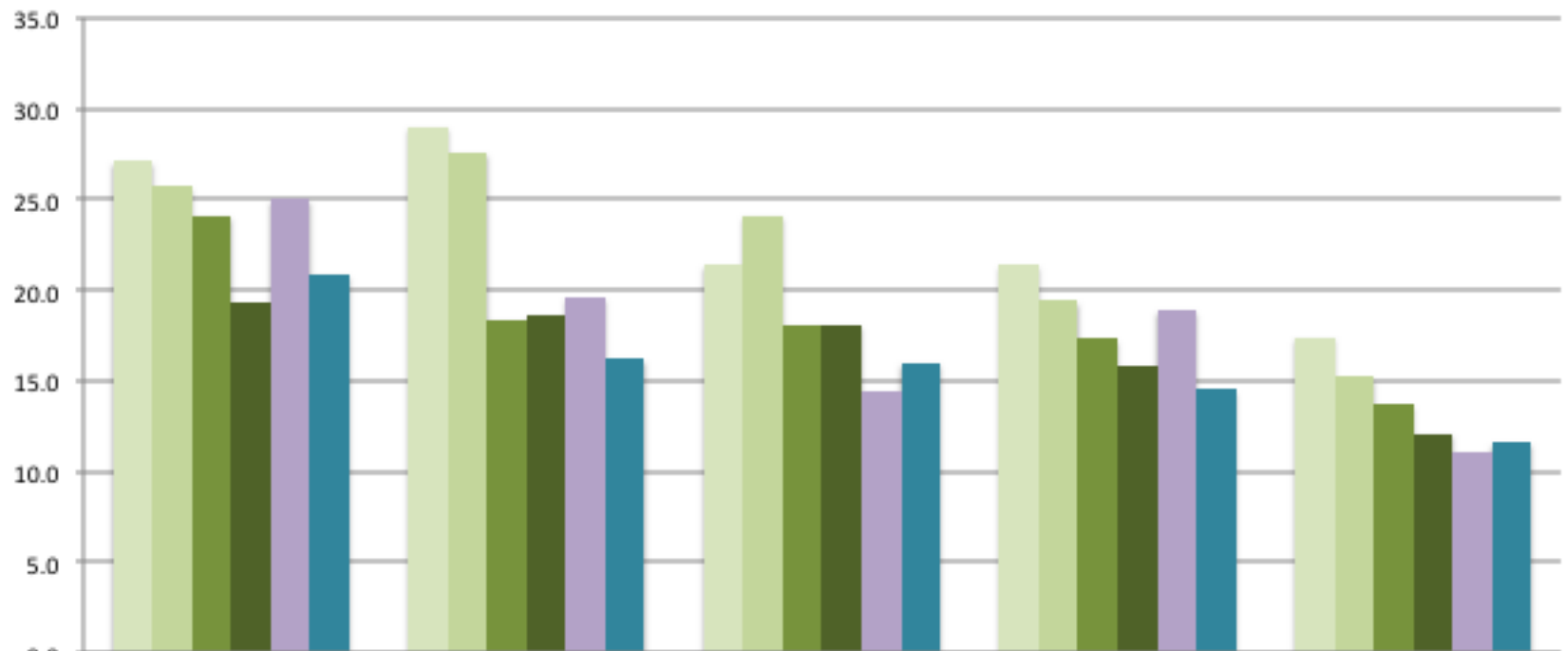
	Students With Disabilities	Eng Lang Learner	Migrant Ed	Socioeconomically Disadvantaged	District Total
■ 2012-13 Gr 11-12	6%	9%	25%	31%	35%
■ 2013-14 Gr 11-12	8%	9%	27%	35%	39%
■ 2014-15 Gr 11-12	11%	14%	39%	39%	45%

4-Year Cohort Dropout Rate ESUHSD by Ethnicity 2011, 2012, 2013, 2014



	Hisp	Nat Am	Asian	Pac Is	Filipino	Af Am	White	2 or more Races	Total Students
2010-11	26.7	18.8	6.6	18.6	12.0	14.4	14.4	11.8	17.4
2011-12	23.4	23.1	5.9	19.6	7.3	18.9	12.8	21.9	15.2
2012-13	21.7	15.8	5.7	9.1	8.8	17.5	9.7	13.0	13.7
2013-14	18.5	35.5	4.7	11.1	7.0	14.5	11.6	18.2	12.1
SC County	20.6	26.3	3.2	9.1	6.5	16.3	5.2	8	11.1
State	14	18.9	4.7	12.4	4.5	20.3	7.6	8.4	11.6

4-Year Cohort Dropout Rate ESUSHD Special Populations 2011, 2012, 2013, 2014



	ELL	Mig Ed	SPED	SED	Total Students
2010-11	27.1	29.0	21.4	21.4	17.4
2011-12	25.7	27.6	24.1	19.4	15.2
2012-13	24.1	18.4	18.1	17.3	13.7
2013-14	19.3	18.6	18.1	15.8	12.1
SC County	25	19.6	14.4	18.9	11.1
State	20.9	16.2	16	14.5	11.6

Who are our dropouts?

ESUHSD Non-Graduate Completers					
	2010-11	2011-12	2012-13	2013-14	2014-15
% of Dropouts that are completer non-graduates	92.6%	91.2%	89.7%	91.20%	89.70%
% of students completing grade 12 that are completer non-graduates	11.9%	9.9%	9.2%	12.2%	10.1%

East Side Union High School District

	2011-12		2012-13		2013-14		2014-15	
Disciplinary Actions	Total Disciplinary Actions - Most Severe	Unique Students	Total Disciplinary Actions - Most Severe	Unique Students	Total Disciplinary Actions - Most Severe	Unique Students	Total Disciplinary Actions - Most Severe	Unique Students
Out of School-Suspension	1878	1375	1181	917	1342	985	913	678
Total Disciplinary Events	2876	1732	1935	1284	1960	1259	1589	984

ESUHSD

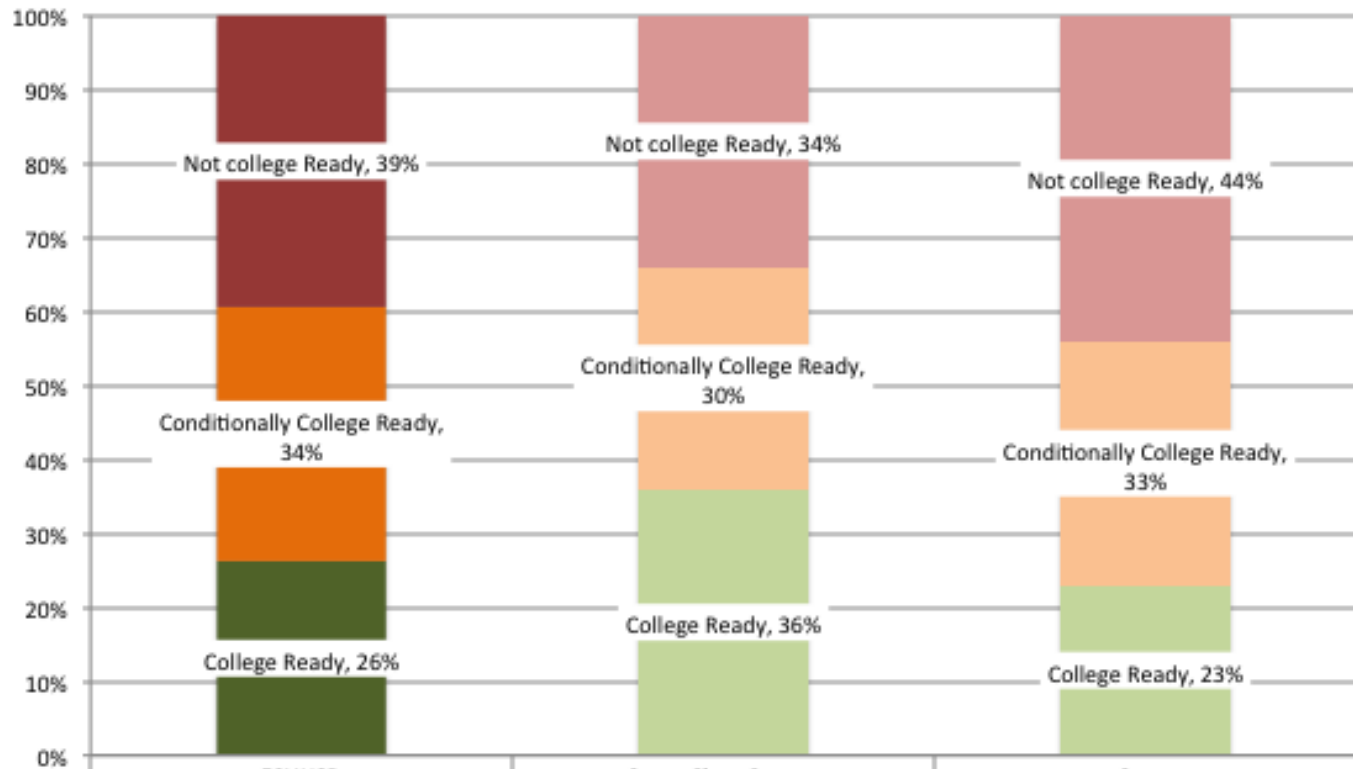
2011-2015 Student Disciplinary Actions

	2011-12	2012-13	2013-14	2014-15
Total Disciplinary Actions	2876	1935	1960	1589
Suspensions Out of School	1878	1181	1342	913
Suspensions In School	252	277	244	304
Expulsions	29	34	29	12
No Suspension/Expulsion	717	443	345	360

2013-14 baseline data

- **A decrease of 371 Disciplinary Actions**
- **A decrease of 429 Out of School Suspension**
- **A decrease of 307 unique students suspended**
- **An increase of 60 In School Suspension**
- **A Decrease of 17 Expulsions**

EAP College Readiness - English Language Arts ESUHSD, Santa Clara County, State 2014-15 CAASPP

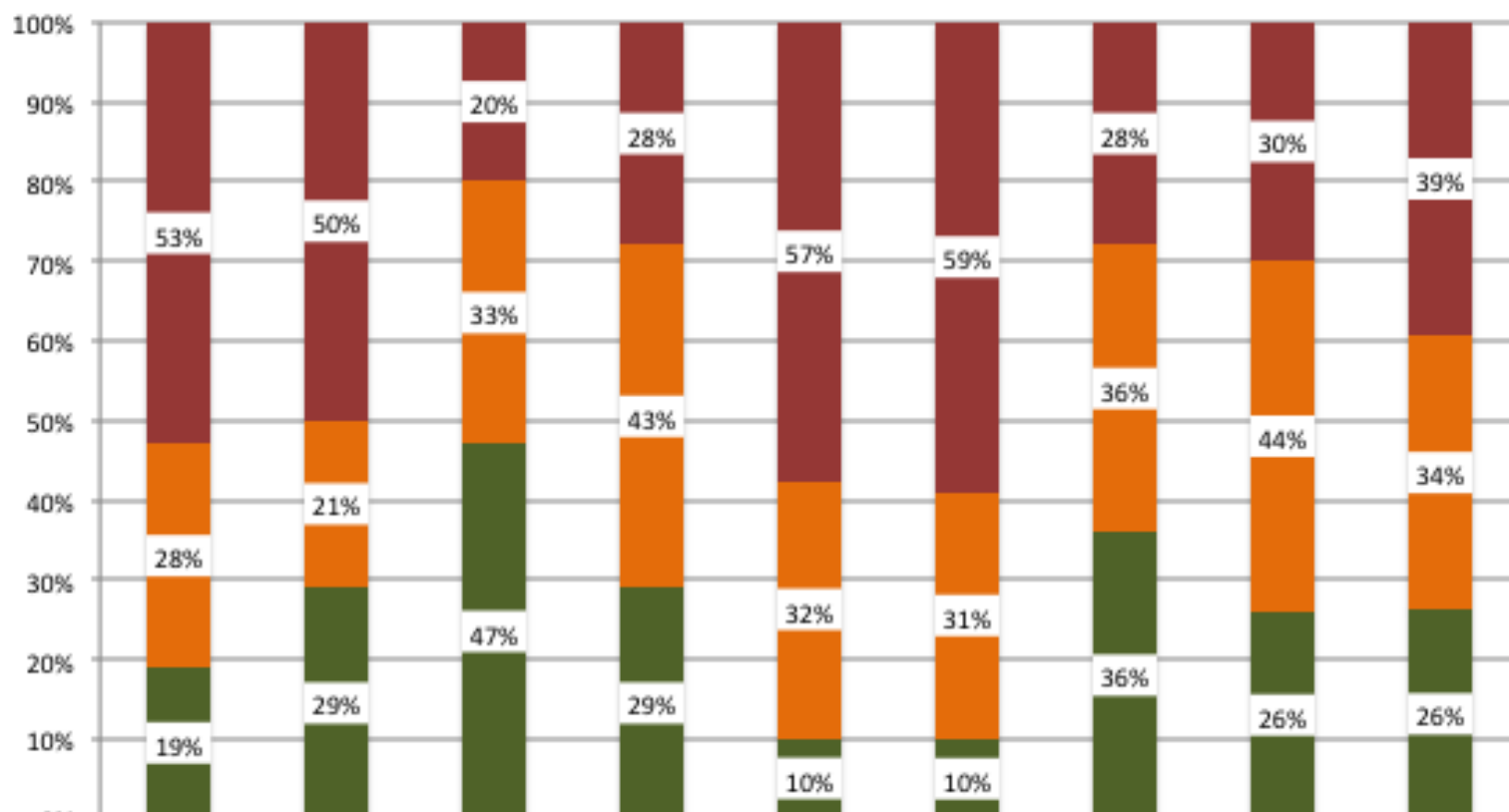


	ESUHSD	Santa Clara County	State
Not college Ready	39%	34%	44%
Conditionally College Ready	34%	30%	33%
College Ready	26%	36%	23%

Below county – Above the state

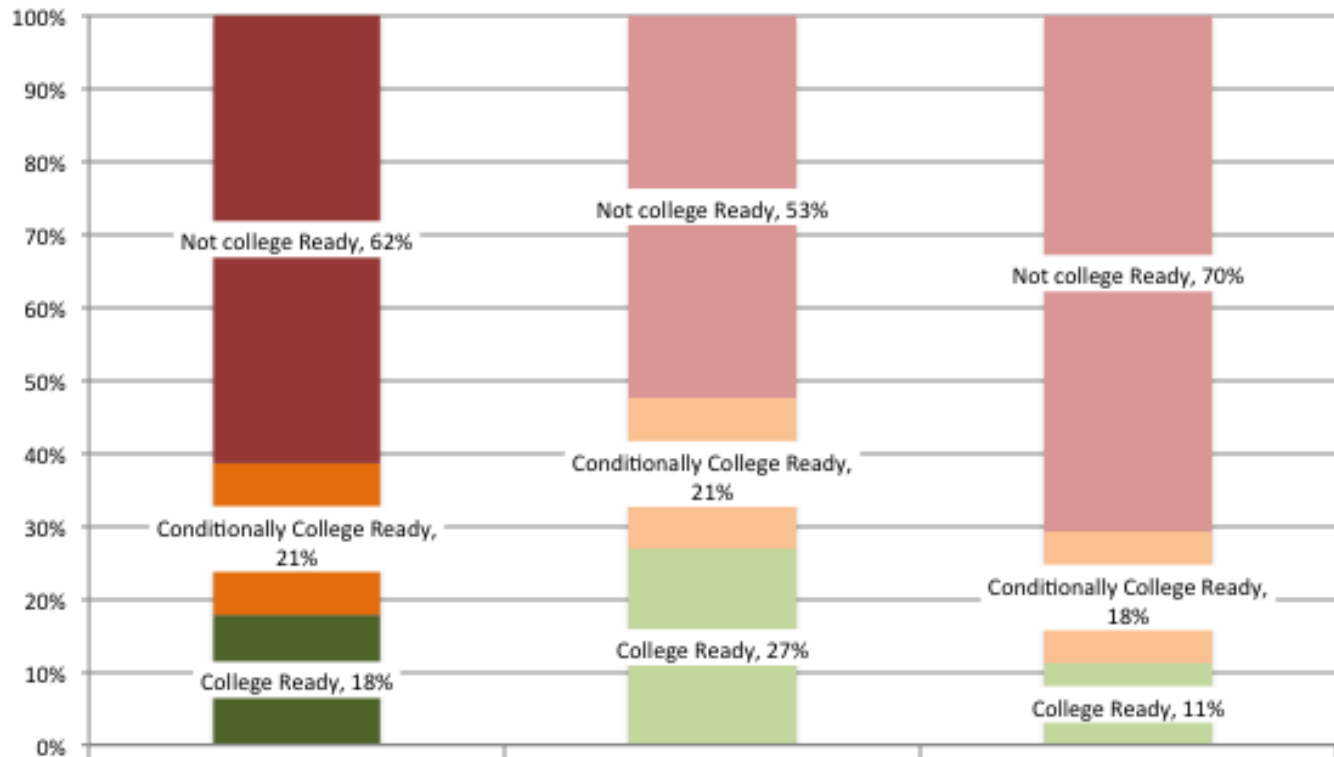
- 26% College Ready
- 60% Conditionally College Ready or college Ready

EAP College Readiness - English Language Arts ESUHSD - Ethnicity 2014-15 CAASPP



■ Not college Ready	53%	50%	20%	28%	57%	59%	28%	30%	39%
■ Conditionally College Ready	28%	21%	33%	43%	32%	31%	36%	44%	34%
■ College Ready	19%	29%	47%	29%	10%	10%	36%	26%	26%

EAP College Readiness - Mathematics ESUHSD, Santa Clara County, State 2014-15 CAASPP



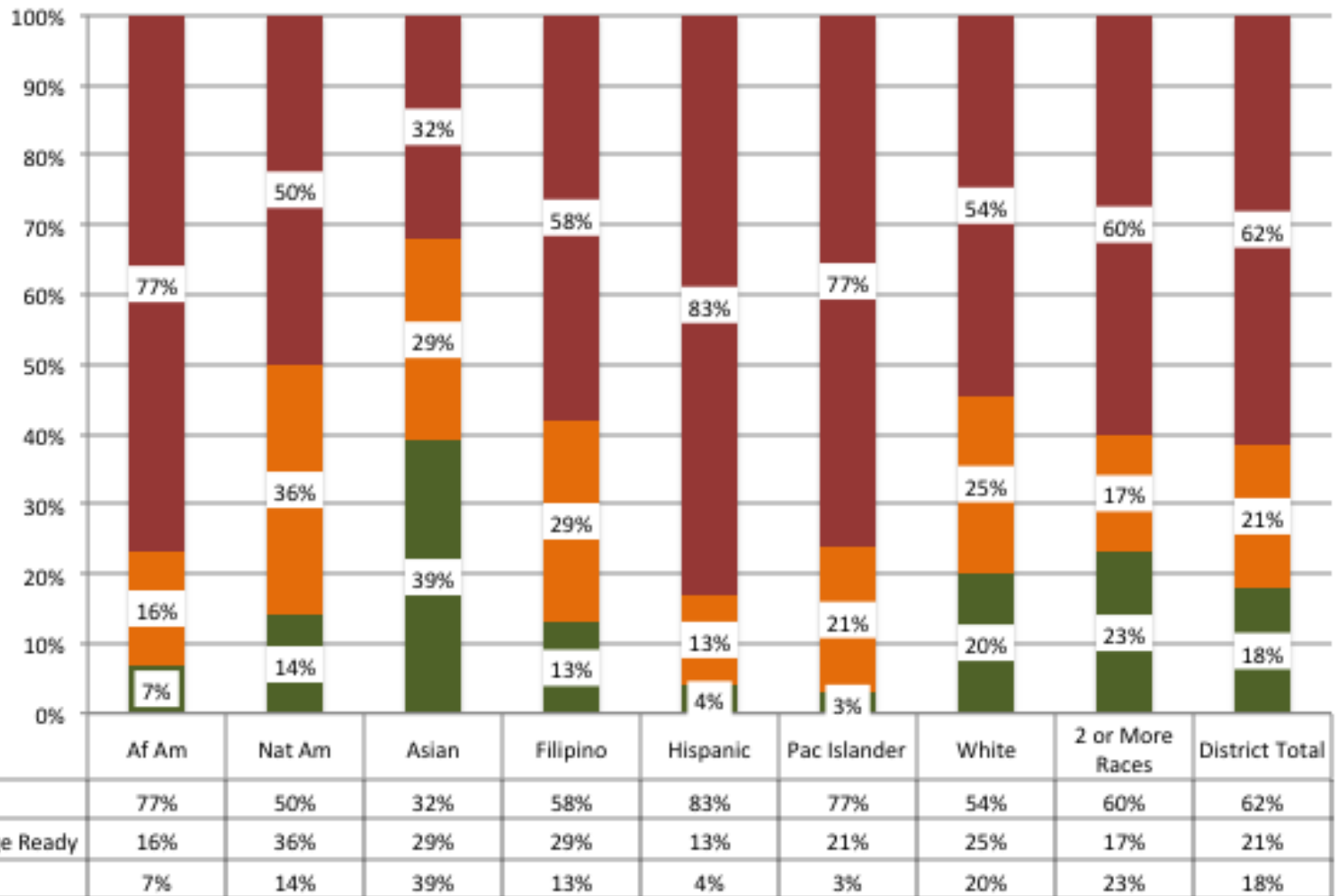
	ESUHSD	Santa Clara County	State
Not college Ready	62%	53%	70%
Conditionally College Ready	21%	21%	18%
College Ready	18%	27%	11%

Below county – Above state

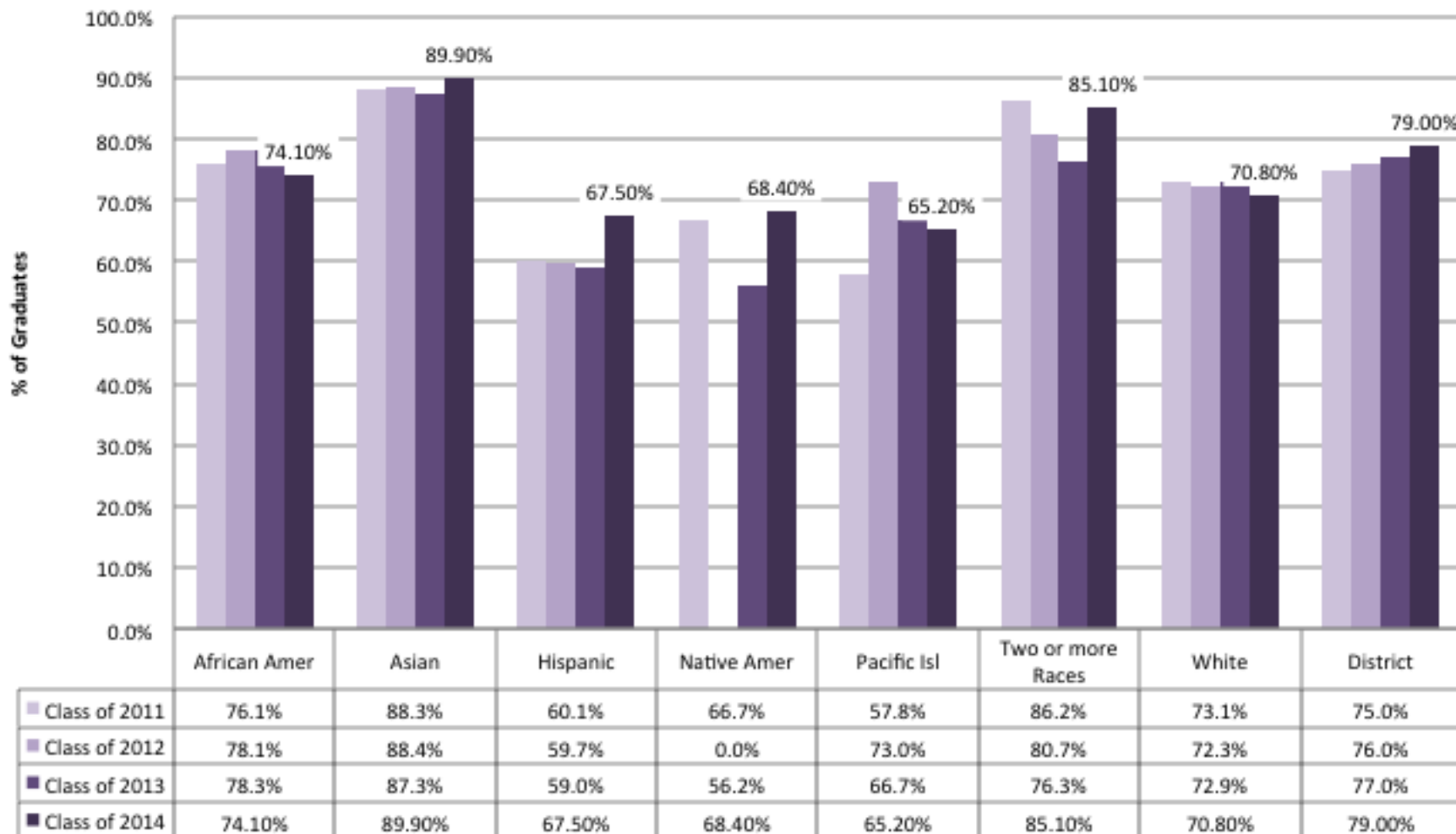
- 18% College Ready
- 39% Conditionally College Ready or College Ready

- All 11th Gd students take the same Math test regardless of the math course they are taking
- Old EAP only 11th grade students in Alg 2 or higher took the EAP

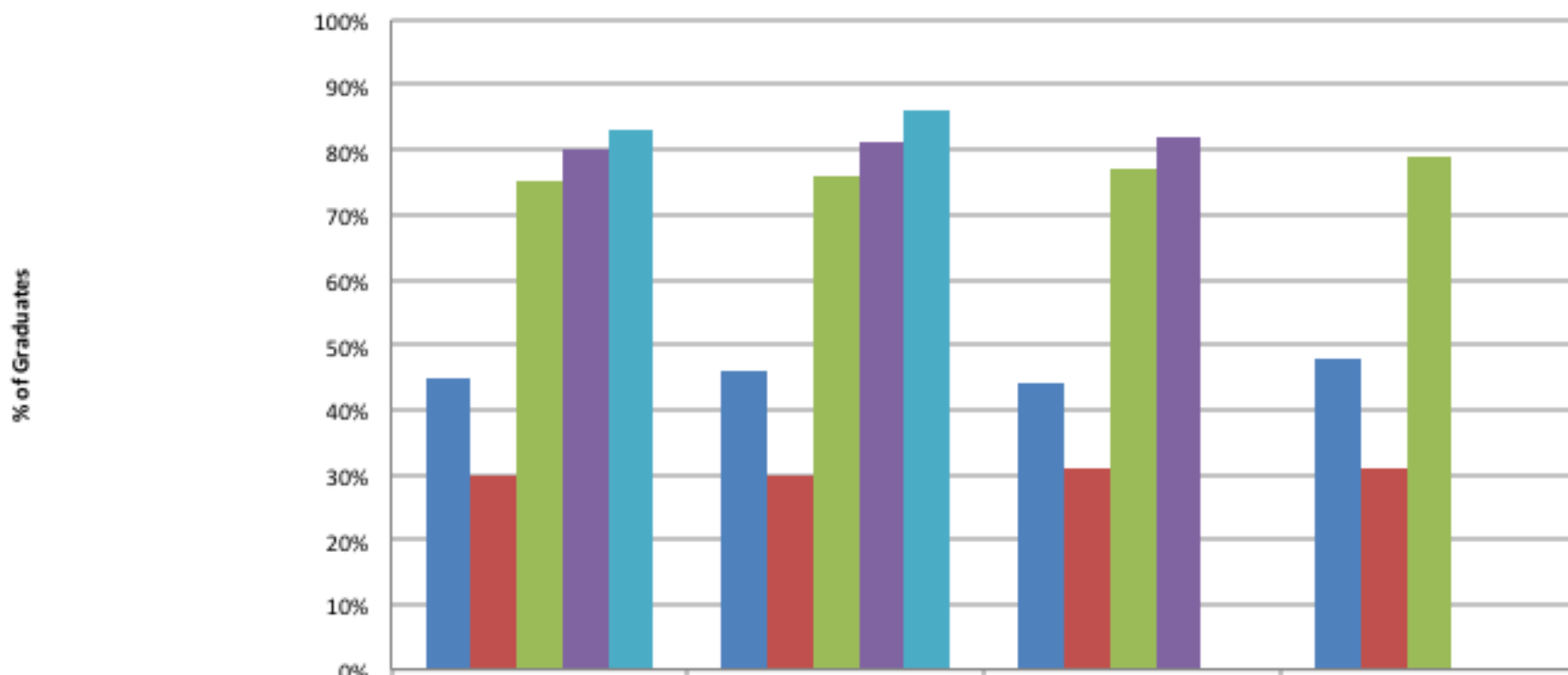
EAP College Readiness - Mathematics ESUHSD - Ethnicity 2014-15 CAASPP



East Side Union High School District Classes of 2011, 2012, 2013, 2014 Fall Enrollment into College



East Side Union High School District Classes of 2011, 2012, 2013, 2014 First Enrollment into College



	Class of 2011	Class of 2012	Class of 2013	Class of 2014
2-Year Institution Fall Enrollment	45%	46%	44%	48%
4-Year Institution Fall Enrollment	30%	30%	31%	31%
First Enrollment in the Fall	75%	76%	77%	79%
First Enrollment any time 1st year	80%	81%	82%	
First Enrollment within Two Years	83%	86%		

Conclusions

- Default A-G pathway has positively effected student outcomes
- District focus on Grads, UC/CSU A-G, Dropouts, Discipline has created positive growth in district outcomes
- Grad Rate, UC/CSU A-G Rate, Dropout Rate released this winter
 - Improvement 4 years in a row
- Local Grad Rate went down but more students graduated
- Increases in students accessing Alg 2 or higher and higher science courses
- Decrease in student suspensions & expulsions
- Gaps exist – Ethnicity & Special Populations
- Need to create timely data to evaluate programs, LCAP implementation effect, and change negative trajectories for students

Prototype

ESUHSD 2014-15 UC/CSU A-G English

Would this format combine F rate and success metrics into one presentation?

This chart includes all students except SWD in Special Ed only Eng. courses and ELD 1 and ELD 2 students.

Race	A-G A, B, C	Grad only D	Fail F
2 or More Races Sem 1	78%	13%	10%
2 or More Races Sem 2	77%	15%	9%
African American sem 1	67%	18%	15%
African American sem 2	64%	19%	17%
Asian Sem 1	90%	6%	4%
Asian Sem 2	88%	7%	5%
Hispanic Sem 1	63%	17%	21%
Hispanic Sem 2	60%	18%	23%
Nat Am Sem 1	63%	8%	29%
Nat Am Sem 2	53%	18%	29%
Pc Isl Sem 1	63%	19%	18%
Pc Isl Sem 2	56%	18%	26%
White Sem 1	81%	10%	10%
White Sem 2	80%	10%	9%
District Sem 1	76%	12%	13%
District Sem 2	73%	13%	14%

Future changes

- Create timely data reports
 - Allow us to change negative trajectories for students
 - Program evaluation
- Include 5C's
- Social Emotional
- Does it make sense to have one report – Strategic Plan, LCAP, F Rate?
- Does it make sense to do this report out at a board study session next year?
- Create consensus on data definitions such as “on track for UC/CSU A-G”